

SITE PLAN OF THE LAND AT MOUZA-SUBUDDHIPUR, J.L. NO-32, R.S. DAG NO-231, 232 & 231/1269, P.S.-BARUIPUR, DIST-24 PGS(S), R.S. KHATIAN NO-46,263, WARD NO-1 UNDER BARUIPUR MUNICIPALITY.

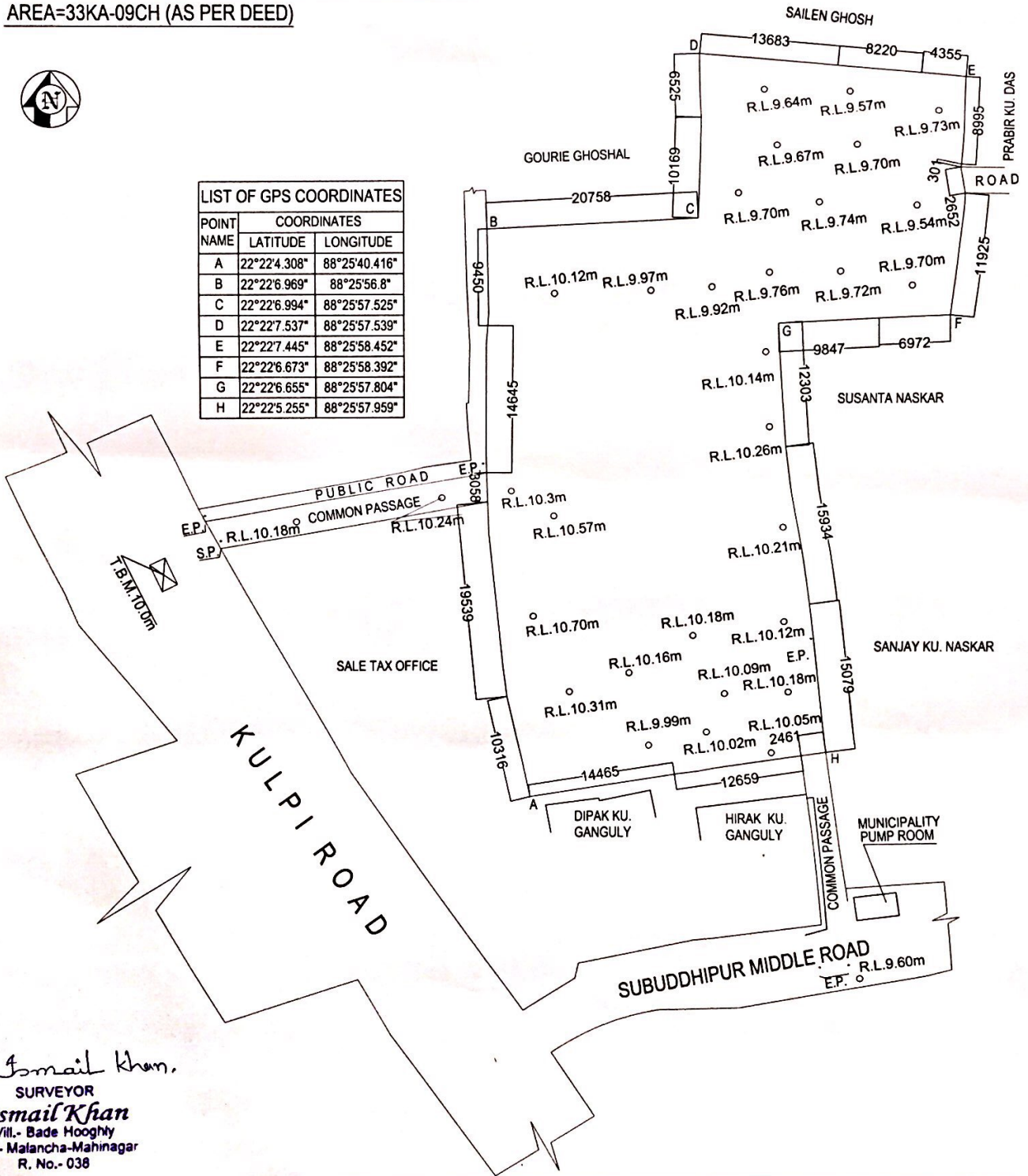
SCALE=1:500

AREA=2219.95 SQ.M.(33KA-03CH-01SFT) AS PER FIELD.

AREA=33KA-09CH (AS PER DEED)



POINT NAME	COORDINATES	
	LATITUDE	LONGITUDE
A	22°22'4.308"	88°25'40.416"
B	22°22'6.969"	88°25'56.8"
C	22°22'6.994"	88°25'57.525"
D	22°22'7.537"	88°25'57.539"
E	22°22'7.445"	88°25'58.452"
F	22°22'6.673"	88°25'58.392"
G	22°22'6.655"	88°25'57.804"
H	22°22'5.255"	88°25'57.959"



Ismail Khan,
 SURVEYOR
Ismail Khan
 Vill.- Bade Hooghly
 P.O.- Malancha-Mahinagar
 R. No.- 038